

Death Numbers

Mahir Wu-2017.9 ©

Death Numbers is a particularly difficult numerical IQ test, and most people can't solve even one item.

Without superfluous knowledge, what you need is pattern recognition skill.

Items are roughly put in difficulty-based order, but it is not absolute, so thinking about each item carefully is best, and **discussing with others is strictly prohibited**.

Two submissions are allowed. The fee for **one** submission is

70CNY/12USD/10EUR. **If your score on this test is 0, I will refund half of the fee.**

(after 28/7/2018) My Paypal or Alipay account is: mahirwu@qq.com. You should send your answers to with the **Submission Table.xls**. If I do not respond in 15 days, send again.

Part *

1a) 12345, 12346, 12348, 12351, 12356, ?

1b) Explain your solution.

2) 0, 1, 4, 9, ?, 25, ?, ?, ?, 121

3a) 0, 0, 0, 0, ?, ?, 10

3b) Explain your solution.

4) 100, ?, ?, 225, 400, 441, 484, ?

5) 76, 87, 78, ?

6) ?, ?, 2, 3, 5, 11

7a) 3, 7, 21, 30, 19, ?

7b) Explain your solution.

8) 3456, -1012, ?, 0.511.52

9a) 107, 108, ?, 109

9b) Explain your solution.

10) 5656, 111111, 2222, ?, 7444, 1185005, ?

Part **

11) 281, 4, 278, 9, ?, 32, 164

12a) 1, 2, 3, 6, 1, 1, 8, 1, ?

12b) Explain your solution.

13) 11, ?, 25, 29, 8, ?, 6, 2

14) 51, ?, ?, ?, 4, 5, 17, ?, 14(3)

15) 1002, 3202, 3606, ?, 512010, 151306, ?

16) -3, 2, 22, 223, ?

17) 1, 25, 36, 49, 225, 256, 576, ?, ?

18) 17, ?, 35, 28, 46, 357, ?, 4, /, 12, /, ?

19) 135792468, 11053456, ?, 1110, 111

20) 11, 56, 22, 09, 33, ?, 44, ?, ?, 44

21) 2, 4, 5, 6, 7, 8, 11, ?, ?, ?, ?

Part ***

22) 1, 8, 9, 10, 8, 9, 10, 8, ?, ?

23) 165842397, 167532948, 3711159, 3451627, ?, 31425, 369, ?, ?, ?

24a) 132456879, 32456879, ?, 34657, 435

24b) 132456879, 32456879, ?, ?, 2435, 324, ?

25a) 586413927, 586713429, 586913724, 587416329, ?, ?, ?

25b) Explain your solution.

26) 123456789, 111111110, 105409254, ?

27) 146398275, 658349172, ?, 896217543, ?, 674295813

28a) 4, 7, 8, 15, 24, 60, ?

28b) 1, 3, 4, 7, 6, 12, 8, 15, 13, 18, 12, 28, ?, ?

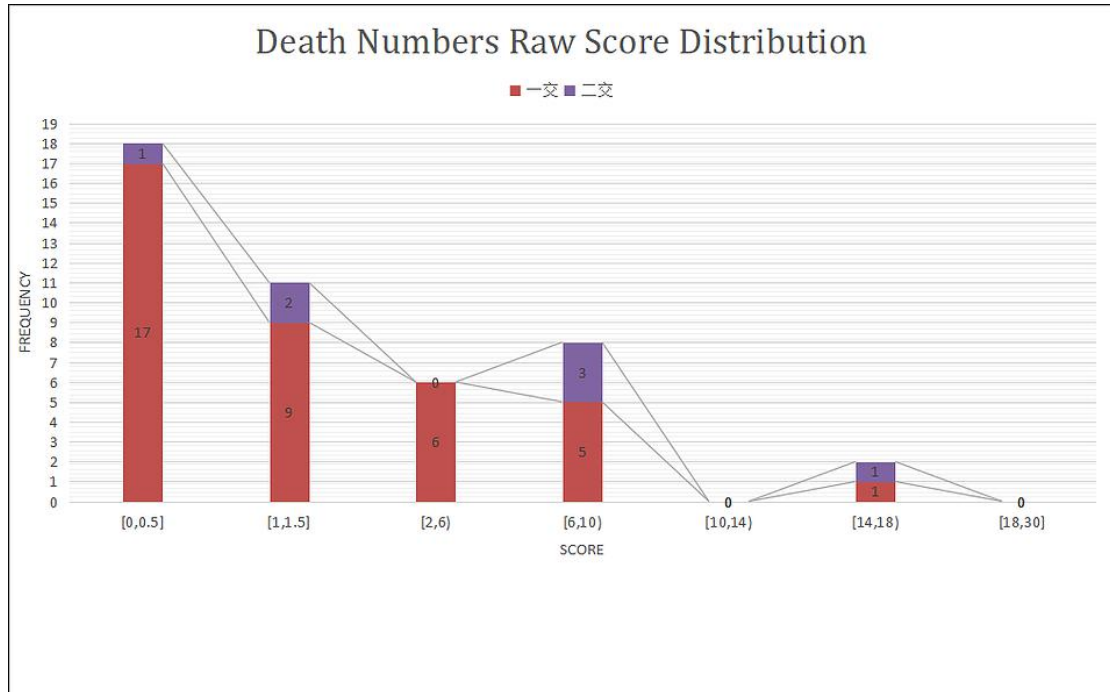
29) 0, 1, 2, 1, 3, 2, 4, 1, 4, 3, 5, 2, 6, 4, 6, 1, 7, 4, 8, 3, 8, 5, 9, 2, 9, 6,

8, 4, ?, ?, ?, ?, ?, ?

30) 1234321, 26121262, 1241212121212, ?

Death Numbers Statistical Report

(28/8/2018)



Accuracy					
item1	item2	item3	item4	item5	item6
0.457	0.130	0.022	0.283	0.152	0.000
item7	item8	item9	item10	item11	item12
0.120	0.022	0.000	0.000	0.196	0.283
item13	item14	item15	item16	item17	item18
0.000	0.022	0.000	0.065	0.174	0.109
item19	item20	item21	item22	item23	item24
0.065	0.000	0.196	0.109	0.065	0.065
item25	item26	item27	item28	item29	item30
0.065	0.087	0.065	0.207	0.130	0.065

All Samples	
N	38+7+1
Items	30
Max	17.5
Min	0
Mean	3.152
Median	1
130 Probability	0.61
145 Probability	0.28
160 Probability	0.17
175 Probability	0.04
Difficulty	0.895
Good items	13
Average items	5
Suspicious items	2
Bad items	4
Unsolved items	6
Overall quality	0.665
Stdev	4.50
Variance	20.22
SEM	0.66
Cronbach's alpha	0.905

Death Numbers Second Norm

(updated: 28/8/2018)

Raw Score	IQ (SD=15) Cronbach α =0.905	Score List
0	/	XXXXXXXXXXXXXO
0.5	125	XXXX
1	130	XXXXXXXXXO
1.5	135	XXO
2	140	XX
2.5	142	
3	144	XX
3.5	146	
4	147	XX
4.5	149	
5	150	
5.5	152	
6	154	
6.5	155	X
7	157	X
7.5	158	O
8	160	XX
8.5	161	O
9	162	XO
9.5	163	
10	164	
11	166	
12	167	
13	169	
14	170	
15	172	X
16	174	
16.5	175	O
17	176	
17.5	177	*
18	178	
19	180	
20	182	
21	184	
22	186	
23	188	
24	190	
25	192	
26	194	
27	196	
28	198	
29	200	
30	>200	