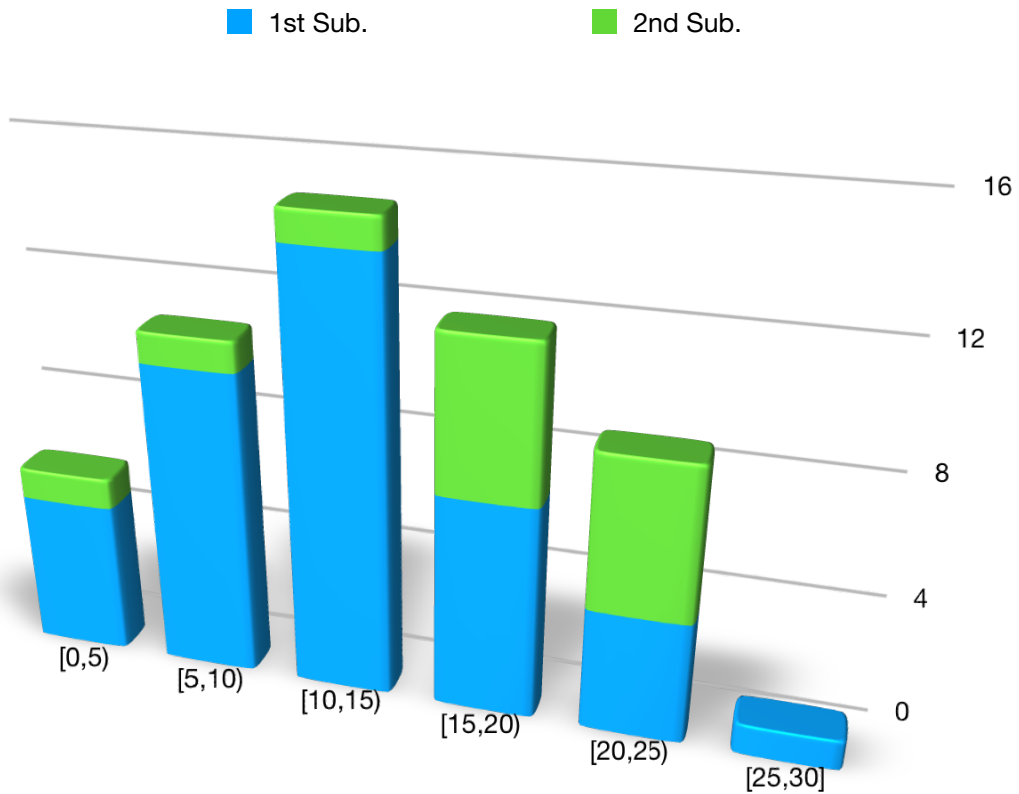


Logic Intelligence Test - Form I

The Second Norm And Statistics Report

May 1st 2020, Zhonglin Li

1-Raw Score Distribution.



2-Fundamental Descriptive Statistic.

LIT - I Fundamental Descriptive Statistic	
Items	30
Difficulty	0.562
Unsolved Items	0
Stdev	6.298
Variance	39.662
Kurtosis	-0.464
Skewness	0.216
SEM	0.117

	First Attempt	All
N	41	41+13
Max	29	29
Min	2	2
Mean	12.024	13.130
Median	12	13
Quartile Deviation	7	8.75
130 Probability	0.732	0.778
145 Probability	0.293	0.407
160 Probability	0.125	0.130
175 Probability	0.024	0.019

3-Reliability.

Cronbach's Alpha	0.919
Split-half	0.928

Excellent reliability measures.

4-Quality Matrix.

The Best Score	29
Good Items (AIQ) [0.7,1]	27
Average Items (SIQ) [0.5,0.7]	3
Suspicious Items (DIQ) [0.3,0.5]	0
Bad Items (MIQ) [0,0.3)	0
Unsolved Items	0
Overall Quality	84.6%
IQ 120-140 Quality	85.9%
IQ 130-150 Quality	85.2%
IQ 140-160 Quality	79.5%
IQ 150-170 Quality	73.9%

5-Score List.

Scores (41+13):

2 *
3 ***
4 **
5 **
6 *
8 ***
9 *****
10 **
11 ****
12 ***
13 *****
14 **
15 **
16 *****
17 *
18 ***
19 *
20 ***
21 *
22 *
23 ***
24 *
29 *

*First Submission

*Second Submission

6-Norm.
(*P.S. SD=15.)

Raw Score	Theoretical IQ*	Raw Score	Theoretical IQ*
3	96	17	150
4	104	18	153
5	112	19	155
6	118	20	157
7	122	21	160
8	126	22	162
9	130	23	164
10	134	24	167
11	136	25	170
12	138	26	173
13	140	27	176
14	143	28	179
15	145	29	182
16	148	30	>185